

TECHNICAL DATA SHEET No. 35

Reece Safety Products Ltd

Unit B9, Lowfields Close, Lowfields Business Park, Elland, West Yorkshire HX5 9DX

Tel: 01422 310456 Fax: 01422 311070 Email sales@reecesafety.co.uk www.reecesafety.co.uk



Product Information and Assembly Instructions - Universal MCB Lockouts UCL1/UCL2/UCL5

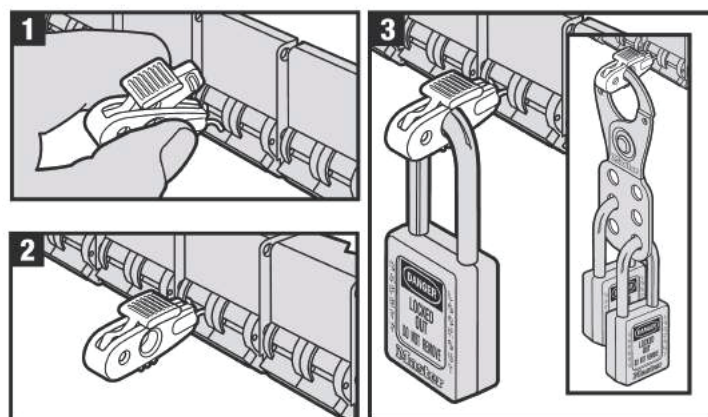
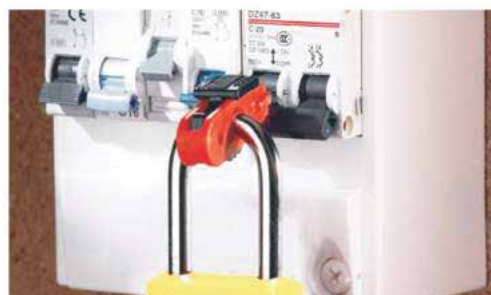


The UCL1, UCL2, UCL5 can be used to lock breakers which have no locking facilities.

- 1 Place circuit breaker in the OFF position
- 2 Place the UCL1, UCL2, UCL5 over the circuit breaker toggle as shown
- 3 Using a small screwdriver, tighten the internal grub screw securing the UCL1, UCL2, UCL5 onto the toggle .
- 4 Place a lockout padlock through the hole as shown
- 5 Verify that the circuit breaker toggle is securely fastened and cannot be switched on

Product Information and Assembly Instructions - 'Pin Out' Circuit Breaker Lockout S2390 & S2391

- Mini Circuit Breaker Lockout to lock safely and effectively most European breakers which have the pin locating holes either side of the toggle
- No tools are required. The Mini Circuit Breaker Lockout is simple to use, quick to apply
- Available for single and multi-pole breakers



- S2390 fits standard width toggle openings. Pin out. Black handle
- S2391 fits wide toggle openings. Pin out. Red handle



S2391

Fits breakers with toggle openings 11mm - 13mm



S2390

Fits breakers with toggle openings 10mm or less

- 1 Place circuit breaker in the OFF position
- 2 Open up and place the S2390/S2391 in the locating holes either side of the toggle as shown
- 3 Close up the S2390/S2391 which holds the pins in place
- 4 Place a lockout padlock through the hole as shown
- 5 Verify that the circuit breaker toggle is securely fastened and cannot be switched on